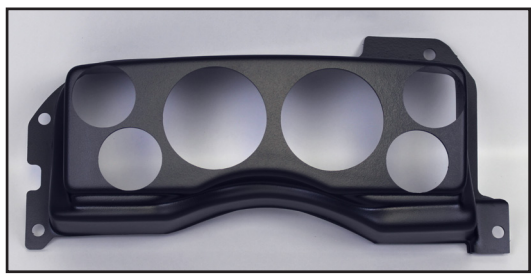




Classic Dash
 5111 Grumman Drive, Unit 1
 Carson City, NV 89706
 775-883-7904
 contact: *Greg Wambold*

**Classic Dash adds
 1987-93 Mustang**

*January, 2015
 FOR IMMEDIATE RELEASE*



Classic Dash has added the popular 1987-93 “Fox” Mustang to its roster of vehicles that can easily have their functionality and appearance updated with a bolt-in custom dash panel. Dashboards for earlier 1979-86 “Fox” Mustangs are already available from Classic Dash.

The panels are manufactured in-house from UV-resistant ABS composite material and are offered in matte black, brushed aluminum and carbon fiber finishes. They are available plain, or with a full compliment of Auto Meter or Thunder Road gauges (choice of 15 styles) and a wiring kit.

Design wise, the panels come with two 3-3/8" openings for the tach and speedometer, plus four 2-1/16" apertures for auxiliary gauges; most enthusiasts opt for short sweep oil pressure, water temperature, voltage and fuel level—although others are available. They are a bolt-in replacement for the OEM panel, and accommodate factory accessories and trim.

Only commonly available tools are needed for the installation, and it can typically be performed in an afternoon by a competent do-it-yourselfer. A complete dashboard wiring kit that integrates into the OEM harness is available and comes with a detailed 24-page instruction booklet.

For additional information visit the firm’s newly revamped website at www.ClassicDash.com, or call 775-883-7904. Classic Dash is an industry leader in providing instrumentation solutions for 1960s, 70s, 80s and 90s muscle cars, classic trucks and later model enthusiast vehicles.

**High-Res COLOR Image
 Available For Download**

This photograph, as well as the text of this press release—is available on-line. To download a high-resolution JPEG image you can visit our E-PR website for the automotive press:

www.electronic-pr.com

It will be filed under “Automotive” for six months from issue date, after that it will be filed under “Archived” releases.

You can also access the page directly by using the following address:

www.electronic-pr.com/pr/new_cd_047.html

After six months use the address below.
www.electronic-pr.com/pr/arch_cd_047.html



prepared by:
**HOLLAND
 COMMUNICATIONS**
 8910 Quartz Avenue
 Northridge, CA 91324
 818-341-4777 #3135-047